

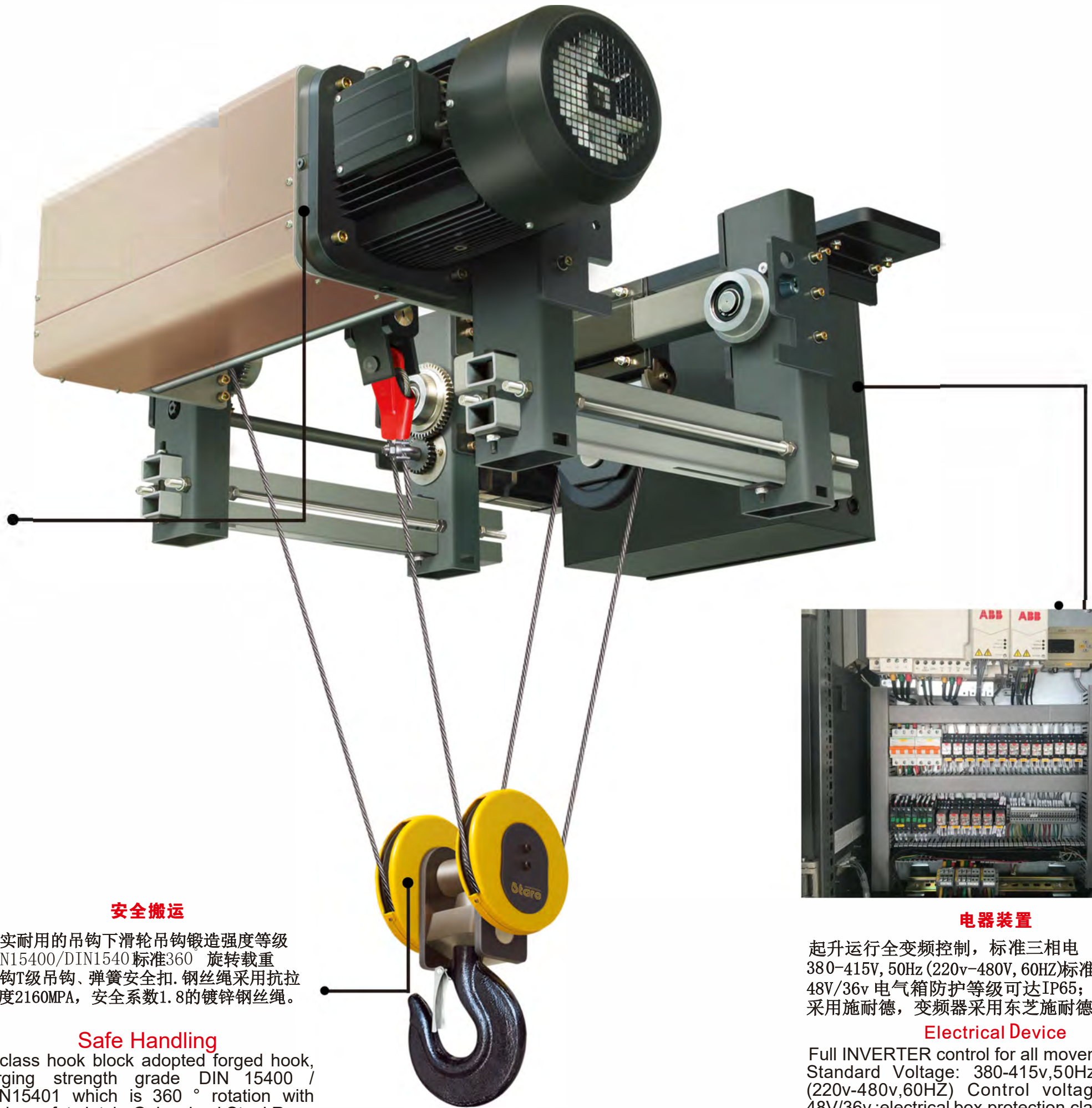


起升减速机行星齿轮

行星齿轮是一种负荷分摊系统，其重量轻且结构紧凑，节省空间。该系统传动效率极高，维护时间间隔得到优化，从而节省运行成本。由于齿面处的滚动和滑动速度低，因此可实现低噪音运转。电机采用中美合资，防护等级可以达到IP65

Hoist Reducer Planetary Gear

Planetary gear is a load sharing system with light weight and compact structure, saving space. The transmission efficiency of the system is very high and the maintenance time interval is optimized to save operation cost. Low noise operation can be achieved due to low rolling and sliding speed at tooth surfaces. Geared Motor is made by the SINO-US JOINT company, And the protection is up to IP65.



安全搬运

坚固耐用的吊钩下滑轮吊钩锻造强度等级 DIN15400/DIN15401 标准360° 旋转载重吊钩T级吊钩、弹簧安全扣。钢丝绳采用抗拉强度2160MPa，安全系数1.8的镀锌钢丝绳。

Safe Handling

T class hook block adopted forged hook, forging strength grade DIN 15400 / DIN15401 which is 360° rotation with spring safety latch. Galvanized Steel Rope is High Strength 2160N/m² with long Service Life and 1.8 times safety factor.

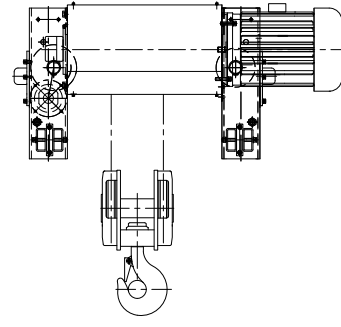
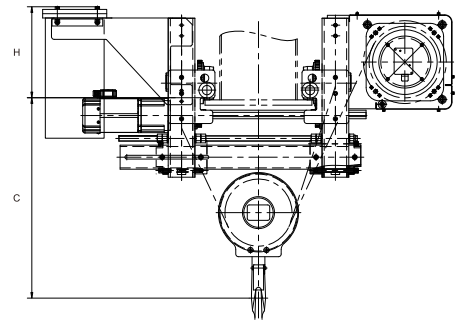


电器装置

起升运行全变频控制，标准三相电 380-415V, 50Hz (220v-480V, 60HZ) 标准控制电压 48V/36v 电气箱防护等级可达IP65；主电器原件采用施耐德，变频器采用东芝施耐德盒子公司。

Electrical Device

Full INVERTER control for all movement, Standard Voltage: 380-415v, 50Hz (220v-480v, 60HZ) Control voltage: 48V/36v ;electrical box protection class up to IP65; Main Electric component adopt Schneider, ABB, and Inverter adopt Toshiba-Schneider Inverter Company, ABB and others.



单梁钢丝绳电动葫芦选型表

Selection table for single beam steel wire rope electric hoist

额定载荷(Kg) S.W.L Rated load	工作级别 FEM Working level	工作级别 IOS Working level	起升高度 (m) Lifting height	起升速度 (m/min) Lifting speed	运行速度 (m/min) Traveling speed
3.2T	2m	M5/M6/M7	6/9/12/15/18	0-5.0	0-20
3.2T	2m	M5/M6/M7	6/9/12/15/18	0-8.0	0-20
5T	2m	M5/M6/M7	6/9/12/15/18	0-5.0	0-20
5T	2m	M5/M6/M7	6/9/12/15/18	0-8.0	0-20
8T	2m	M5/M6/M7	6/9/12/15/18	0-4.0	0-20
8T	2m	M5/M6/M7	6/9/12/15/18	0-4.5	0-20
10T	2m	M5/M6/M7	6/9/12/15/18	0-4.0	0-20
10T	2m	M5/M6/M7	6/9/12/15/18	0-5.0	0-20
12.5T	2m	M5/M6/M7	6/9/12/15/18	0-4.4	0-20
12.5T	2m	M5/M6/M7	6/9/12/15/18	0-5.0	0-20
16T	2m	M5/M6/M7	6/9/12/15/18	0-4.4	0-20
16T	2m	M5/M6/M7	6/9/12/15/18	0-5.0	0-20
20T	2m	M5/M6/M7	6/9/12/15/18	0-3.6	0-20
20T	2m	M5/M6/M7	6/9/12/15/18	0-5.0	0-20

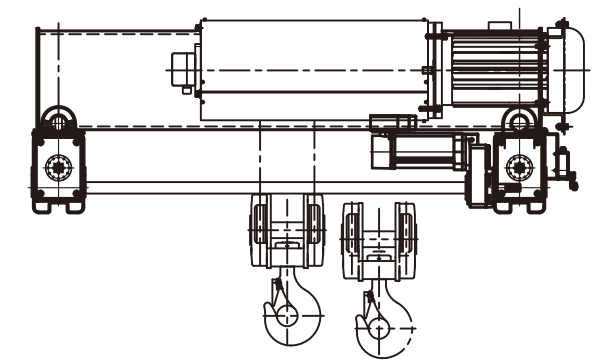
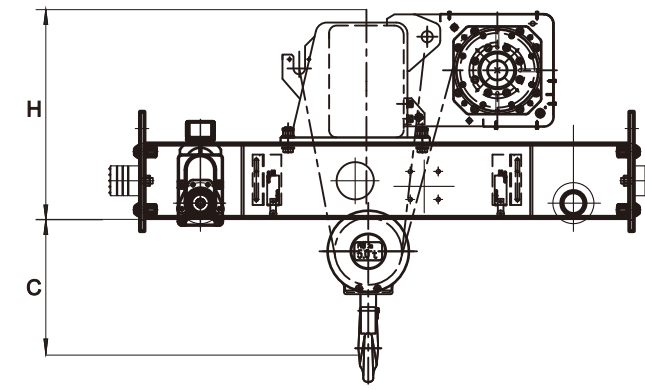
* The capacity is up to 80T

* The classification is up to M7

* The Lifting Height and Speed are customizable

更多参数及非标产品请与我公司联系

Should you need more detailed information please contact us.



双梁钢丝绳电动葫芦选型表

Selection table for double beam steel wire rope electric hoist

额定载荷(Kg) S.W.L Rated load	工作级别 FEM Working level	工作级别 IOS Working level	起升高度 (m) Lifting height	起升速度 (m/min) Lifting speed	运行速度 (m/min) Traveling speed
3.2T	2m	M5/M6/M7	6/9/12/15/18	0-5.0	0-20
3.2T	2m	M5/M6/M7	6/9/12/15/18	0-8.0	0-20
5T	2m	M5/M6/M7	6/9/12/15/18	0-5.0	0-20
5T	2m	M5/M6/M7	6/9/12/15/18	0-8.0	0-20
8T	2m	M5/M6/M7	6/9/12/15/18	0-4.0	0-20
8T	2m	M5/M6/M7	6/9/12/15/18	0-4.5	0-20
10T	2m	M5/M6/M7	6/9/12/15/18	0-4.0	0-20
10T	2m	M5/M6/M7	6/9/12/15/18	0-5.0	0-20
12.5T	2m	M5/M6/M7	6/9/12/15/18	0-4.4	0-20
12.5T	2m	M5/M6/M7	6/9/12/15/18	0-5.0	0-20
16T	2m	M5/M6/M7	6/9/12/15/18	0-4.4	0-20
16T	2m	M5/M6/M7	6/9/12/15/18	0-5.0	0-20
20T	2m	M5/M6/M7	6/9/12/15/18	0-3.6	0-20
20T	2m	M5/M6/M7	6/9/12/15/18	0-5.0	0-20
25T	2m	M5/M6/M7	6/9/12/15/18	0-2.8	0-20
25T	2m	M5/M6/M7	6/9/12/15/18	0-3.8	0-20
32T	2m	M5/M6/M7	6/9/12/15/18	0-2.8	0-20
32T	2m	M5/M6/M7	6/9/12/15/18	0-3.8	0-20
50T	2m	M5/M6/M7	6/9/12/15/18	0-3.0	0-20
50T	2m	M5/M6/M7	6/9/12/15/18	0-4.0	0-20

* The capacity is up to 80T

* The classification is up to M7

* The Lifting Height and Speed are customizable

更多参数及非标产品请与我公司联系

Should you need more detailed information please contact us.